

# Specification For Approval

GaoKe Ant Co., Ltd

Date: 2012/08/01

File No: 2012/08/01/002

Revision: A/1

Manufacture: GaoKe Ant Co.,Ltd

Materiel Number GKA-GSM-004

Production Name GSM Antenna

Production Number GKA-GSM-004

Approved By

GaoKe Ant Co.,Ltd

Add: Ying-Lung Road, No. 163 Longdong compound Longdong first industrial zone C-dong 3 buildings, Guangzhou, P.R.China

Tel: 020-87080630-8020

E-mail: gkzs6@gkzs.com.cn

Fax: 020-87080731

<http://www.gkzs.com.cn>

## 1. Mechanical Specifications

Size	28x110mm	Mounting	Magnetic
Weight	60(g)gram	Connector	SMA Male
Color	Black	Cable	RG174 3m

## 2. Working Conditions

Temperature:  $-40^{\circ}\text{C} \sim +85^{\circ}\text{C}$

Humidity: 0% ~ 95%

## 3. Storage Conditions

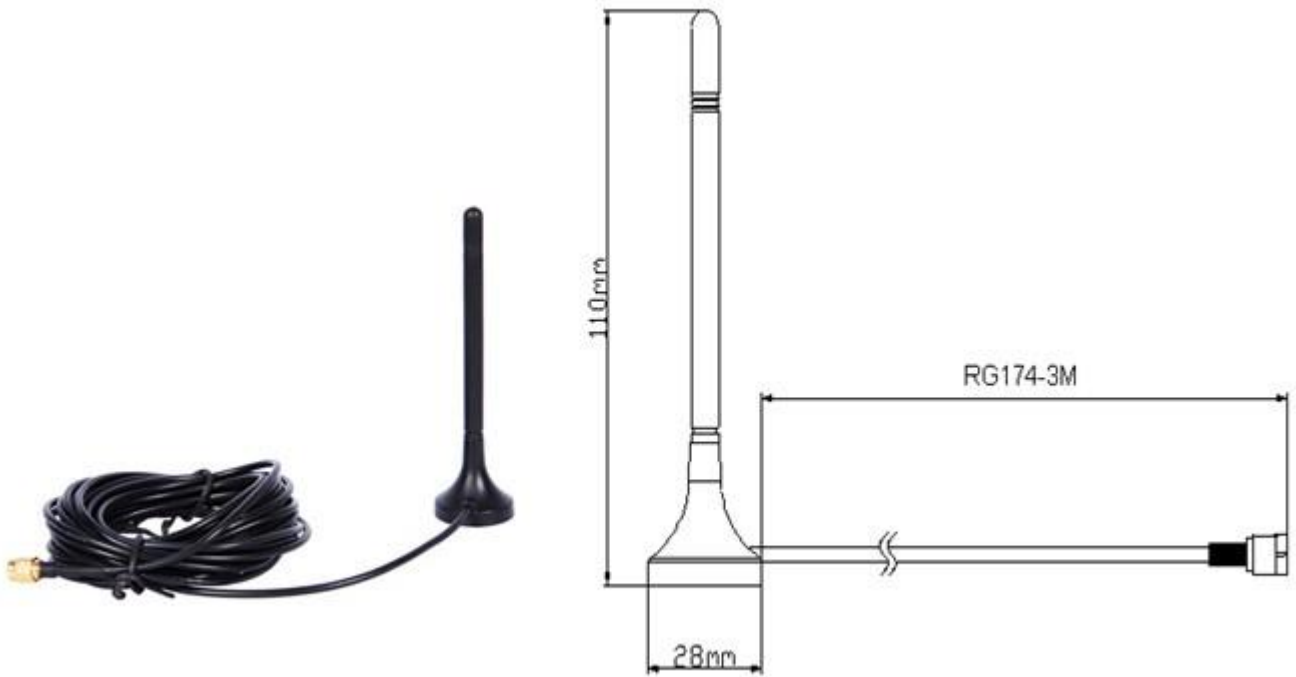
Temperature:  $-45^{\circ}\text{C} \sim +85^{\circ}\text{C}$

Humidity: 0% ~ 95%

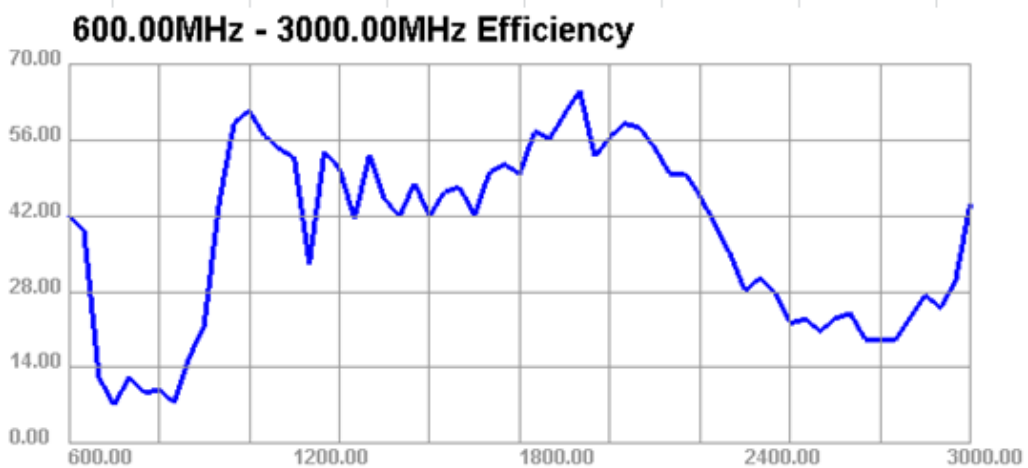
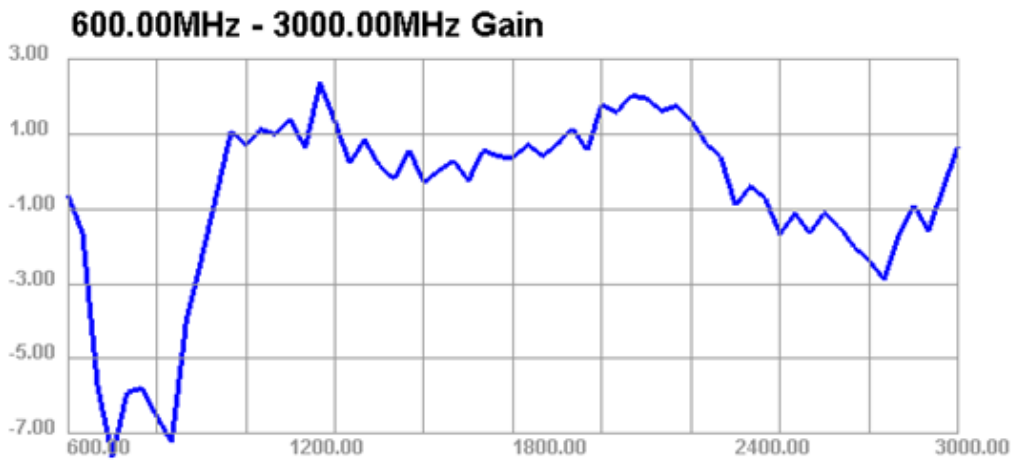
## 4. Antenna Characteristics

NO	Item	Specifications
1	(MHz) Range of Receiving Frequency	824-880 /890-960/1850-1990/1710-2170
2	Band Width(MHz)	1000
3	V.S.W.R(in Center Frequency)	$\leq 2.0$
4	Gain (Zenith)(dBi typ)	2-5
5	Polarization Type	Vertical
6	Impedance( $\Omega$ )	50

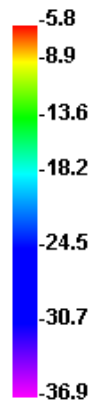
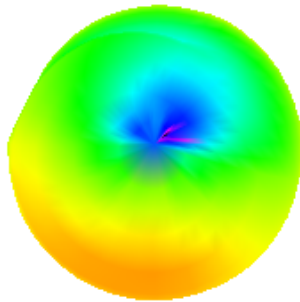
## 5. Antenna Picture And Drawing(mm):



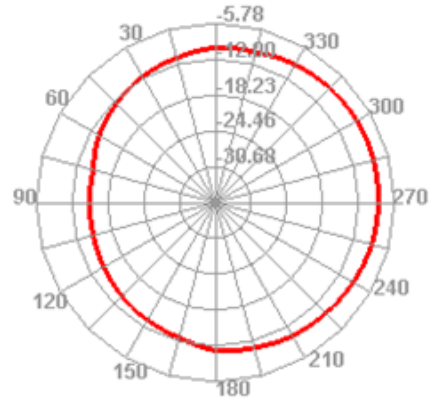
## 6. Antenna Test Figure



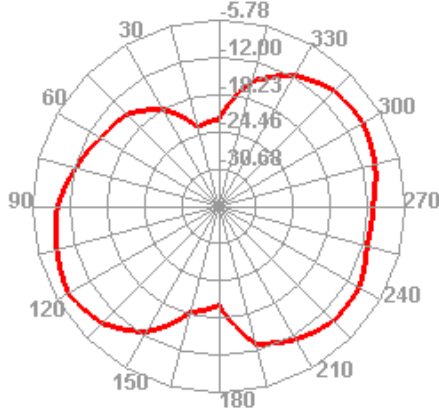
800.000MHz



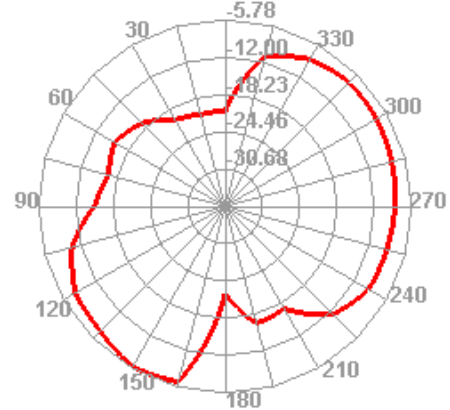
800.000MHz H



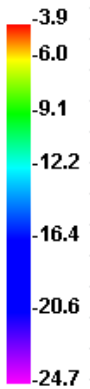
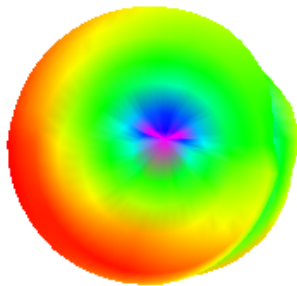
800.000MHz E1



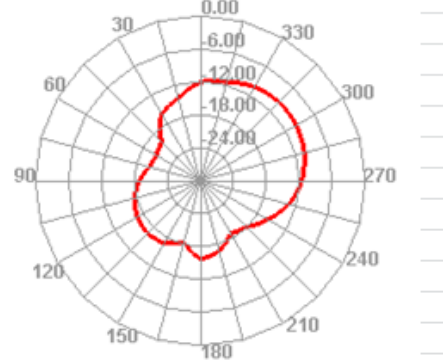
800.000MHz E2



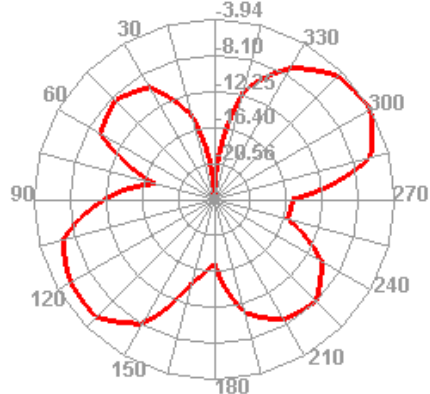
920.000MHz



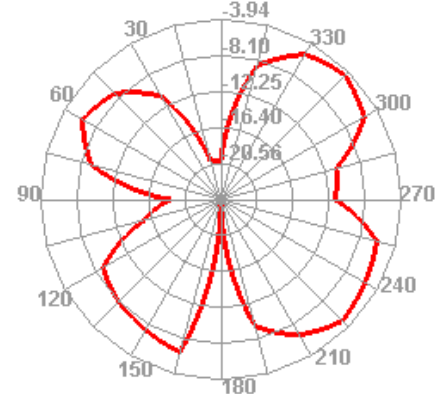
920.000MHz H



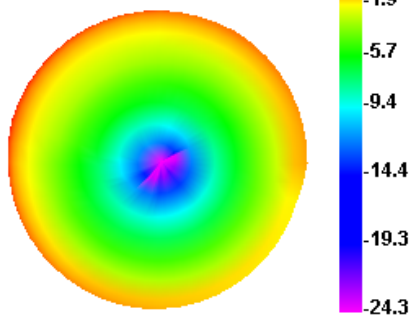
920.000MHz E1



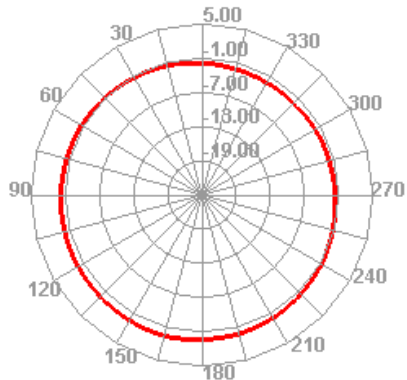
920.000MHz E2



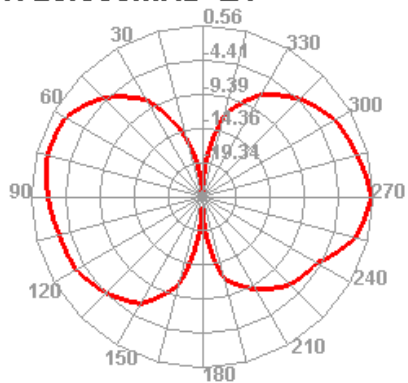
1720.000MHz



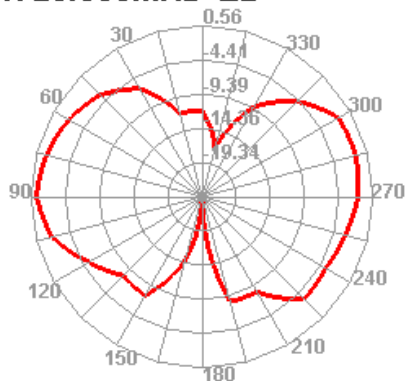
1720.000MHz H



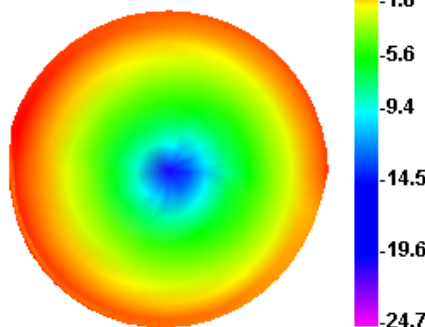
1720.000MHz E1



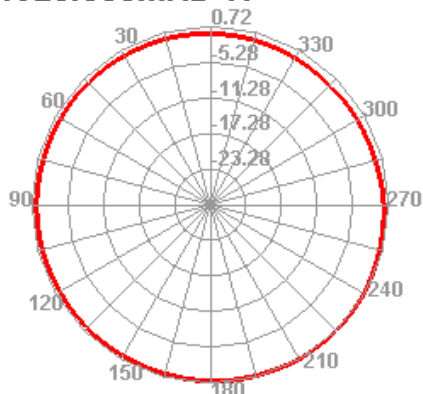
1720.000MHz E2



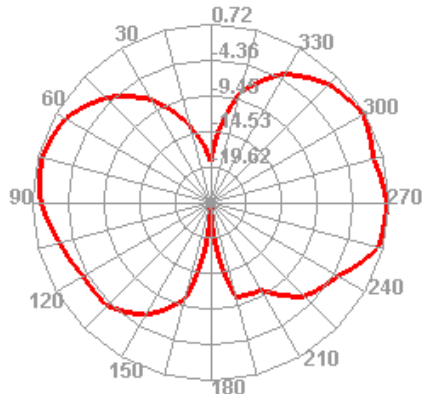
1920.000MHz



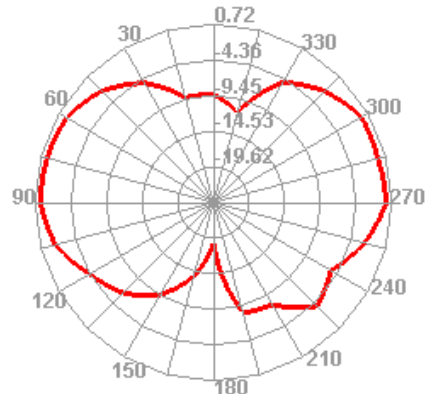
1920.000MHz H



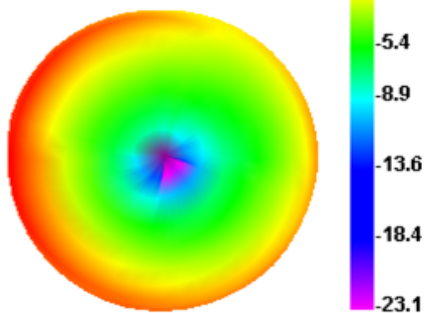
1920.000MHz E1



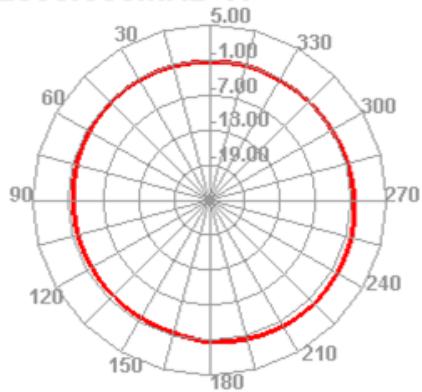
1920.000MHz E2



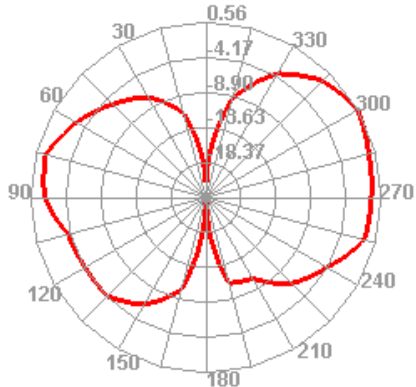
2000.000MHz



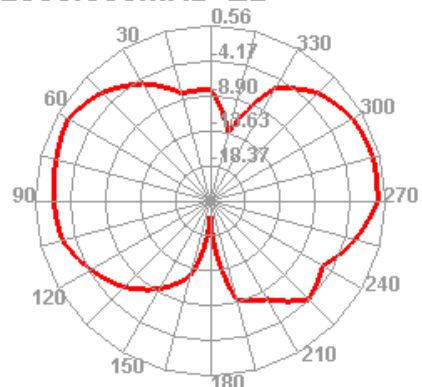
2000.000MHz H



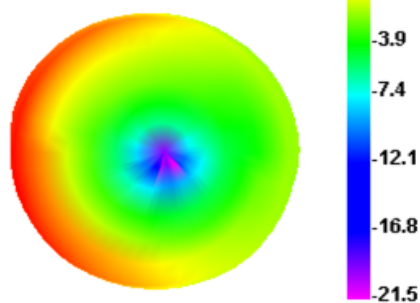
2000.000MHz E1



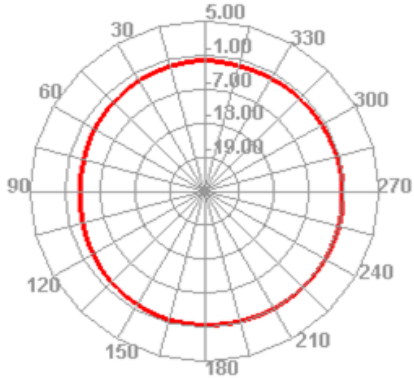
2000.000MHz E2



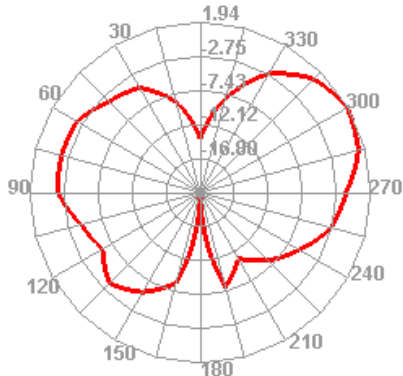
2160.000MHz



2160.000MHz H



2160.000MHz E1



2160.000MHz E2

